



GAT MONTHLY MEMBERSHIP PROGRESS REPORT

Results as of: 3/31/2023

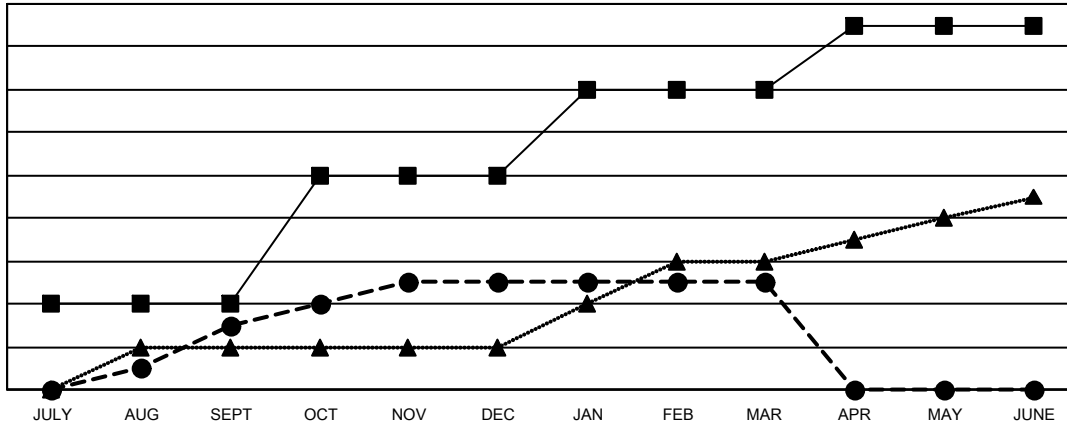
Multiple District 35

LOCATION: FLORIDA

Clubs			
RESULTS FOR 2022-2023			
QUARTER	NEW CLUB GOAL	NEW CLUBS	DROPPED CLUBS
JULY/AUG/SEPT	4	3	3
OCT/NOV/DEC	6	2	7
JAN/FEB/MAR	4	0	4
APR/MAY/JUNE	3	0	0

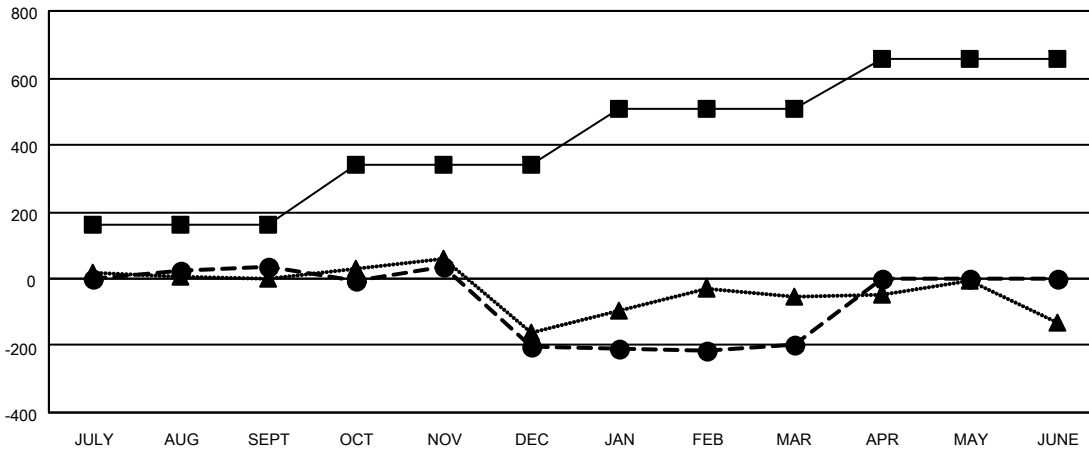
Members			
RESULTS FOR 2022-2023			
QUARTER	MEMBER GROWTH NET GOAL	MEMBER GROWTH ACTUAL	DROPPED MEMBERS ACTUAL (including transfers)
JULY/AUG/SEPT	160	309	221
OCT/NOV/DEC	180	223	443
JAN/FEB/MAR	170	266	203
APR/MAY/JUNE	145	0	0

GOALS AND ACTUAL NEW CLUBS CUMULATIVE



- - CURRENT YEAR GOALS FOR NEW CLUBS
- - CURRENT YEAR ACTUAL NEW CLUBS
- ▲ - LAST YEAR ACTUAL NEW CLUBS

GOALS AND ACTUAL MEMBERS CUMULATIVE



- - MEMBER GROWTH NET GOAL
- - MEMBER GROWTH ACTUAL
- ▲ - LAST YEAR MEMBERSHIP ACTUAL

DROPPED CLUBS: 14	123 CLUBS OF 220 ADDED 1 OR MORE NEW MEMBERS	GENDER DISTRIBUTION
DROPPED MEMBERS	CLICK HERE FOR CUMULATIVE MEMBERSHIP DATA	MALE 2,499 (51.45%)
DECEASED 64		FEMALE 2,355 (48.49%)
CLUB CANCELLED 98		NON BINARY 1 (0.02%)
OTHER 707		PREFER NOT TO ANSWER 2 (0.04%)
TOTAL 869		TOTAL FAMILY UNIT MEMBERS 1,144
		FAMILY MEMBERS PAYING HALF DUES 582